



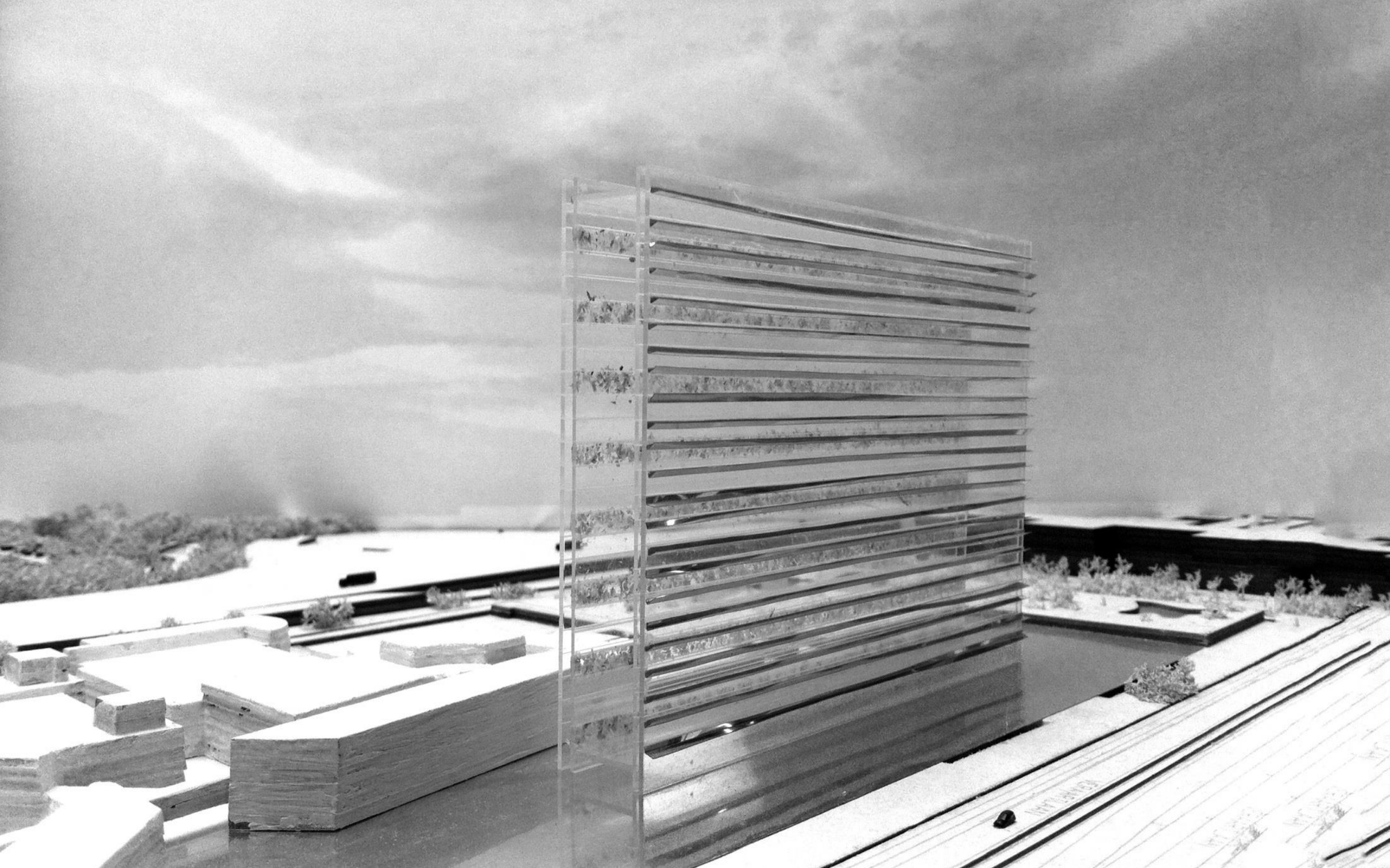
FLOATING IN THE AIR...



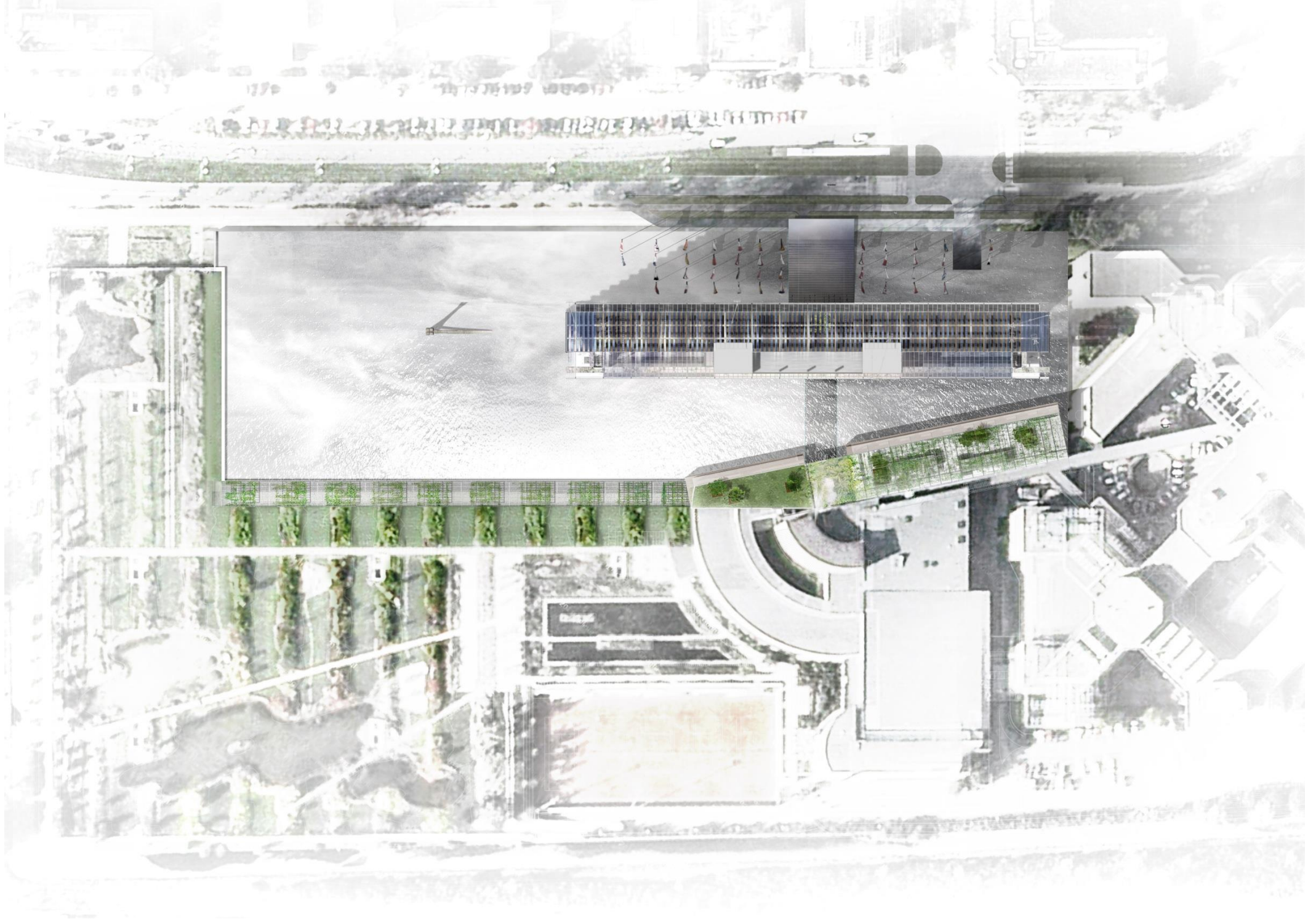






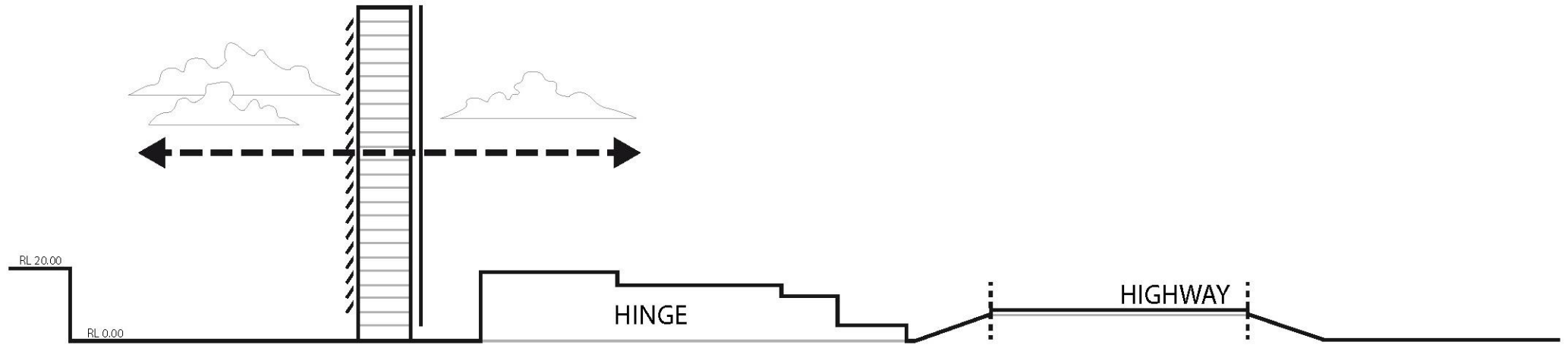






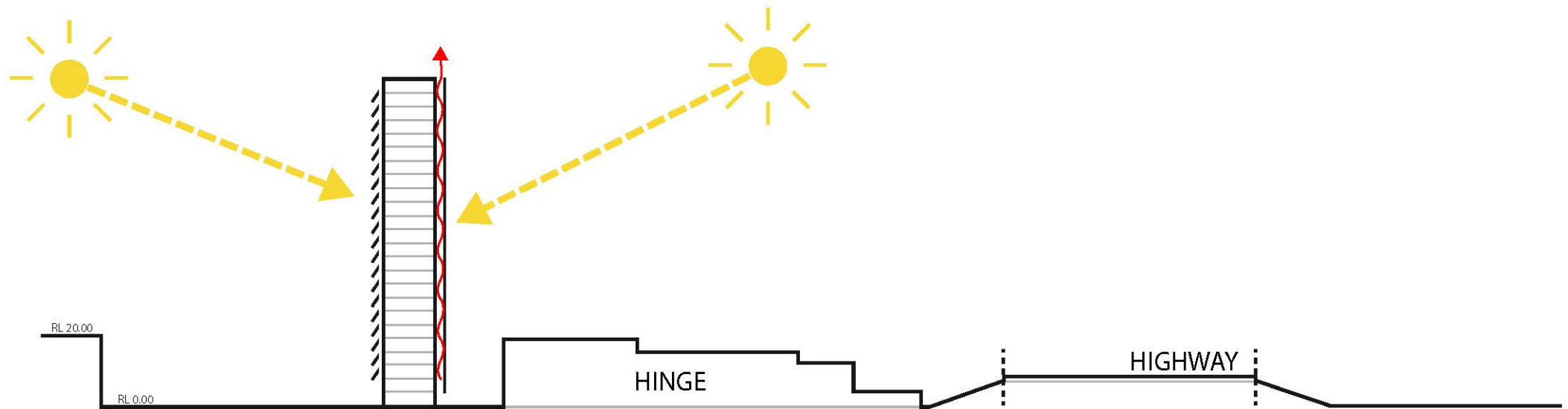
# FACADE CONCEPT





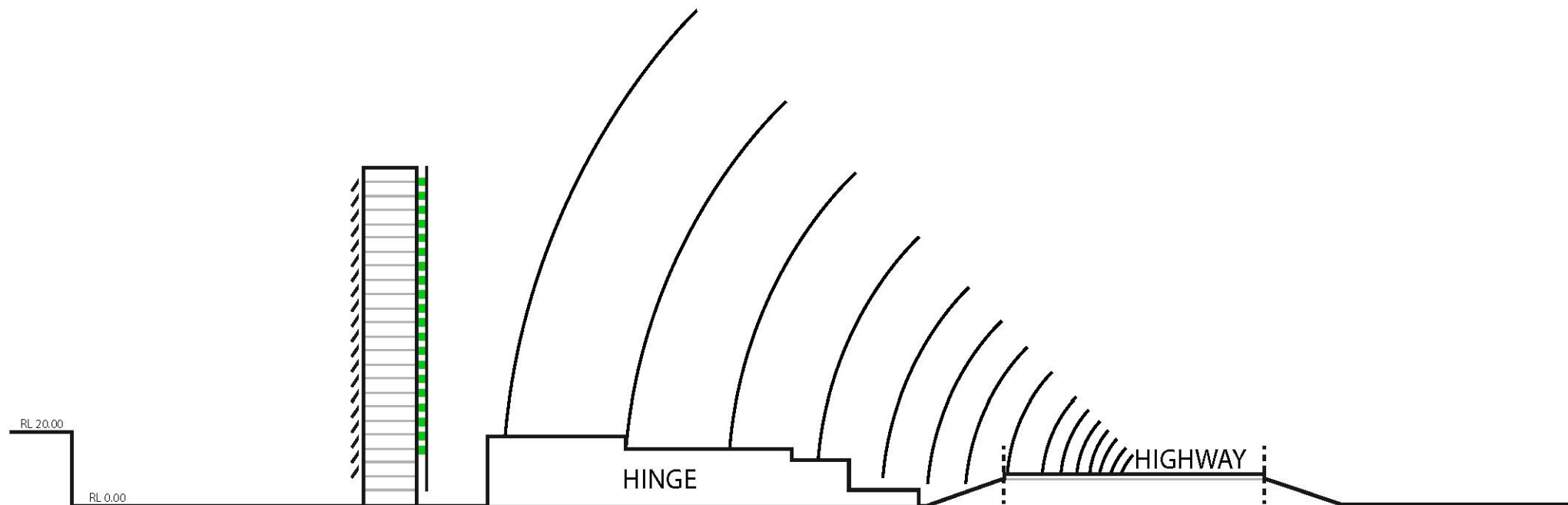
## TRANSPARENCY AND LIGHTNESS

Slenderness and transparency creates the experience of floating in midair, providing dual panoramic views and maximum natural light.



### PASSIVE COOLING/HEATING SYSTEM

The air gap and vegetation within the double skins simultaneously regulate temperature and improve air quality.



## SOUND BARRIER

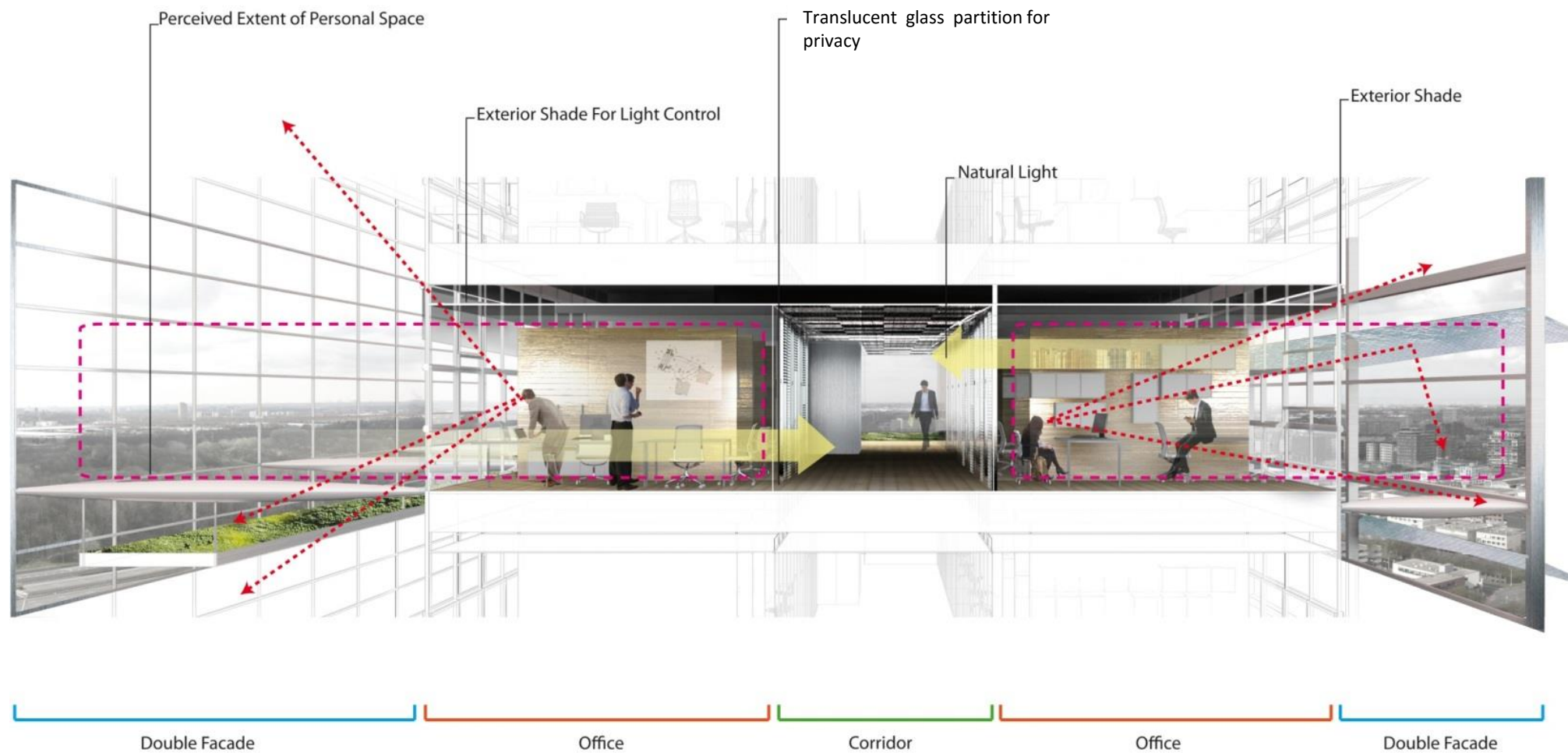
The East double skin serves as a green buffer, reducing noise pollution.

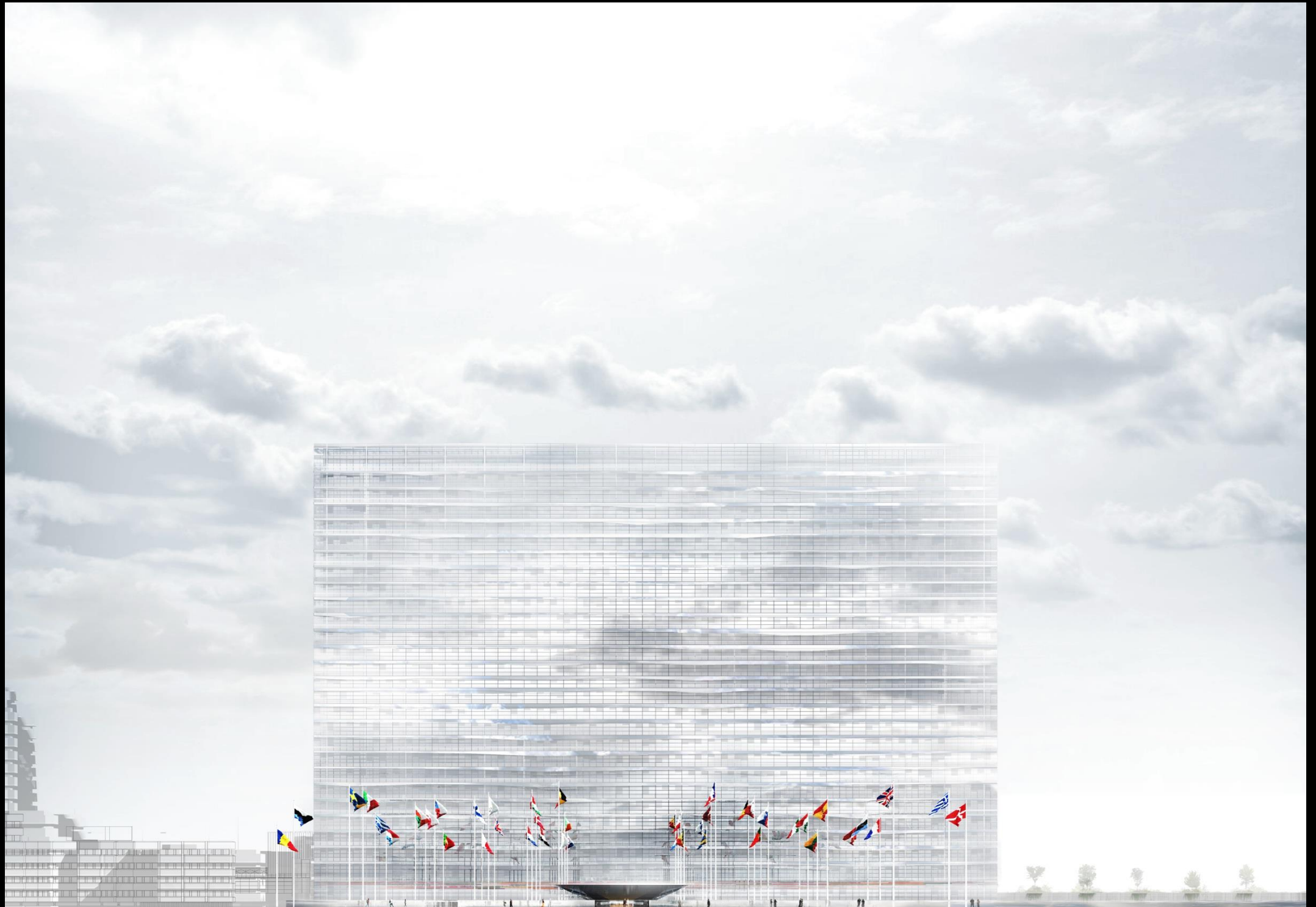




## REFLECTIVITY

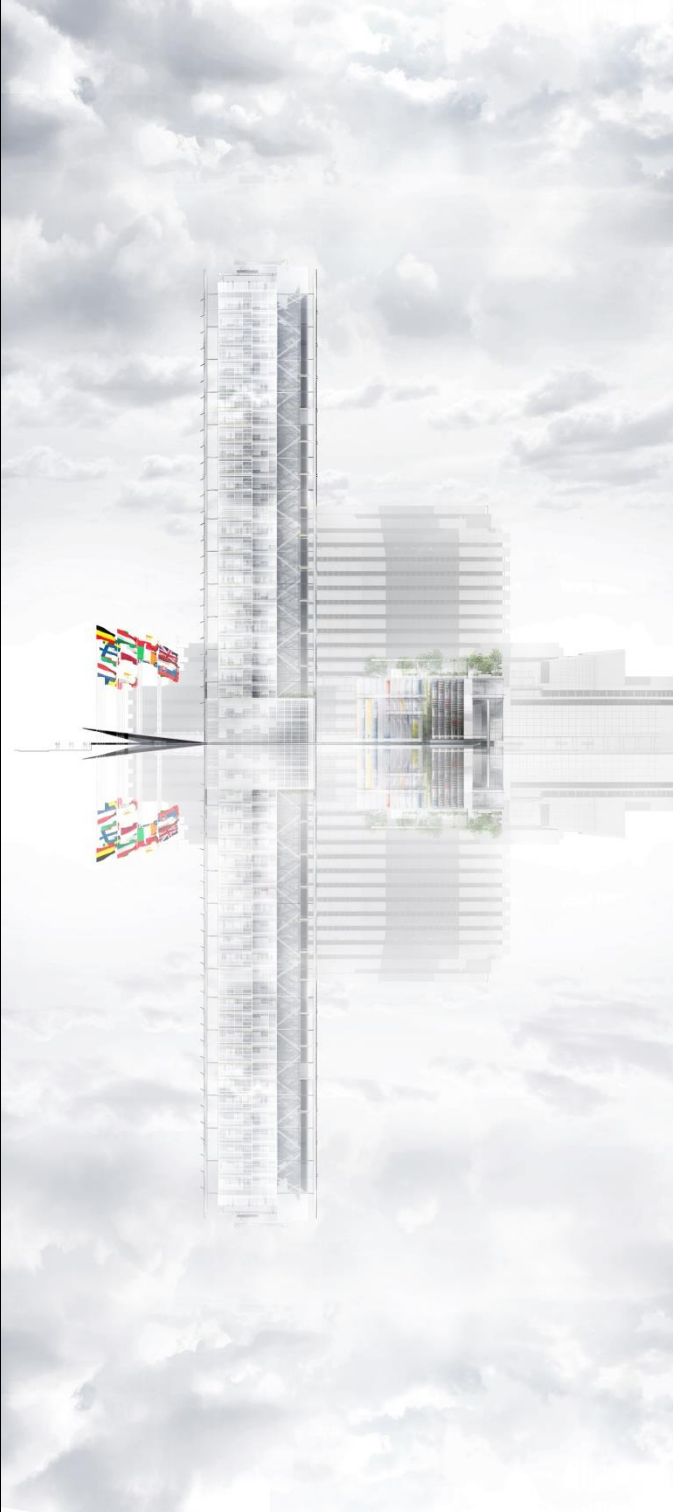
The pool is reflected off the louvers, becoming visible from the offices and integrated into the sky and the horizon.





















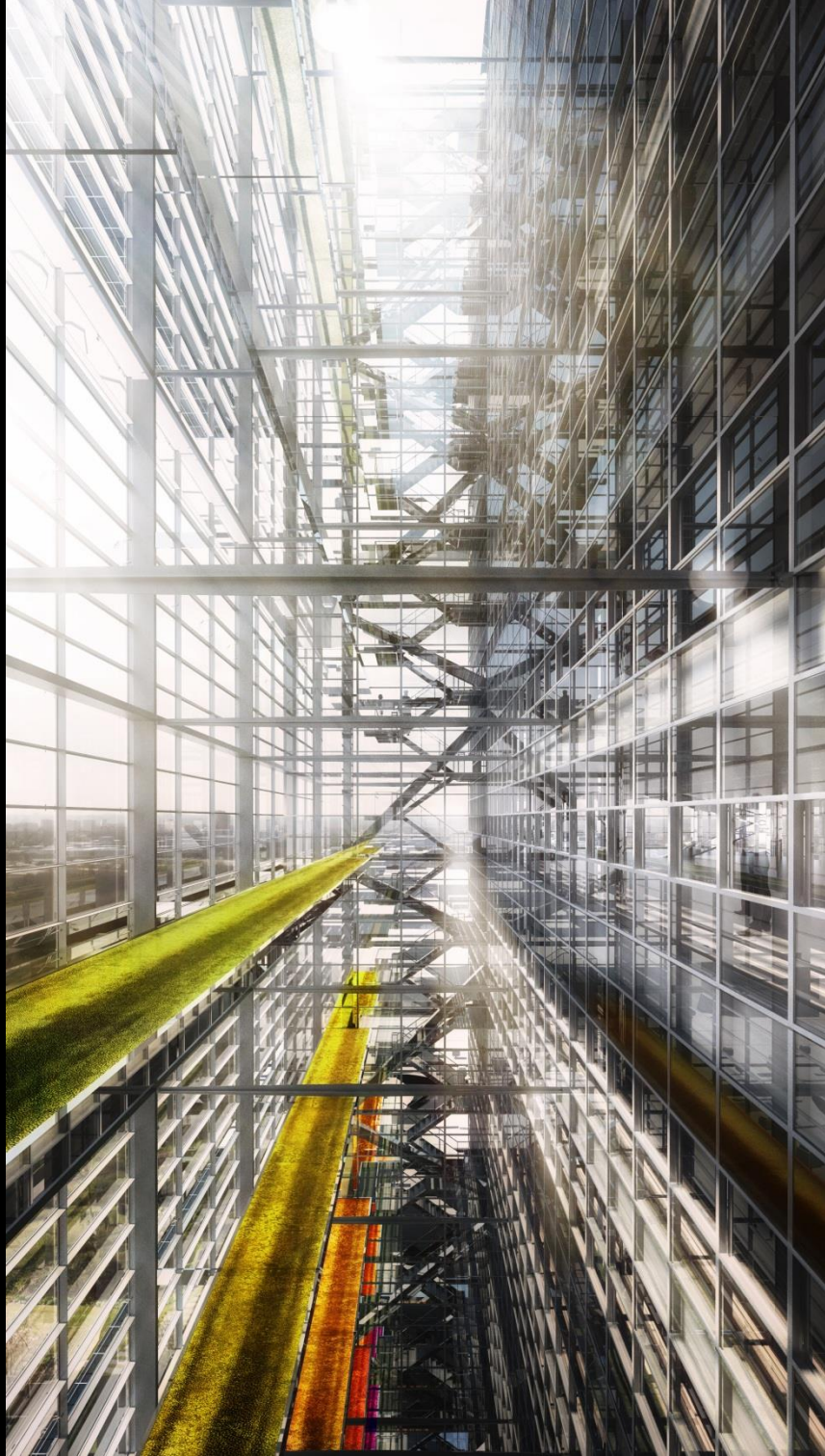




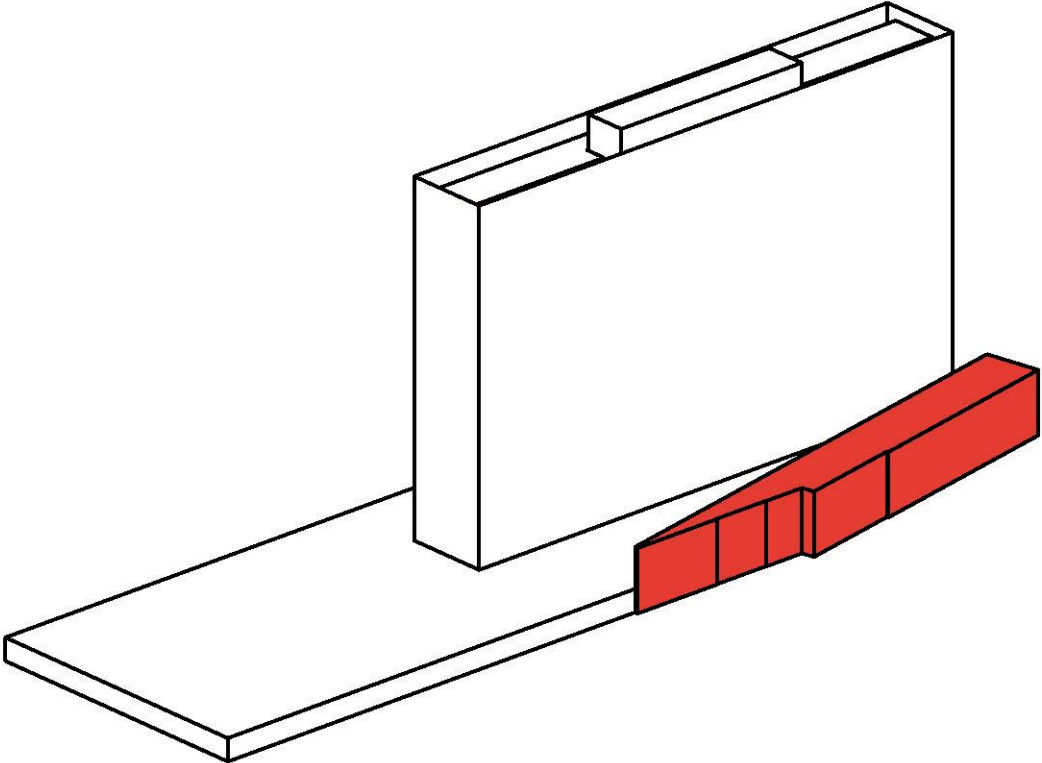








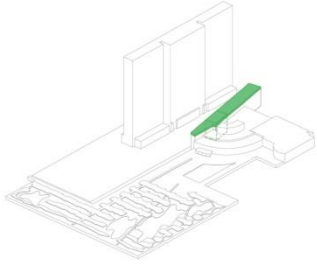
THE HINGE



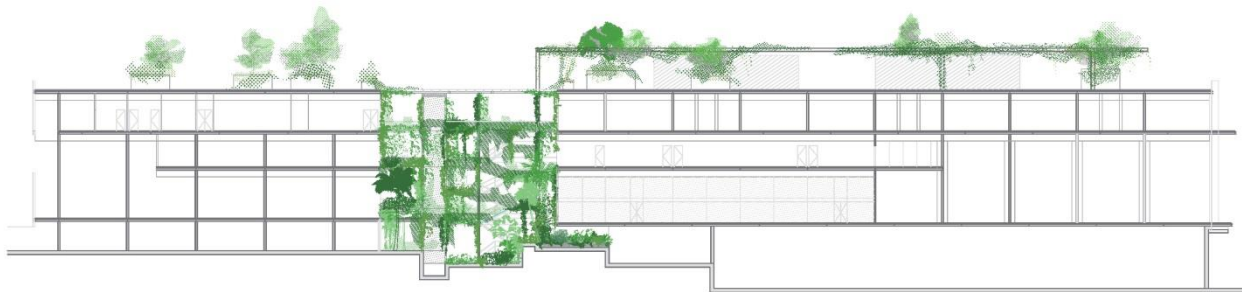




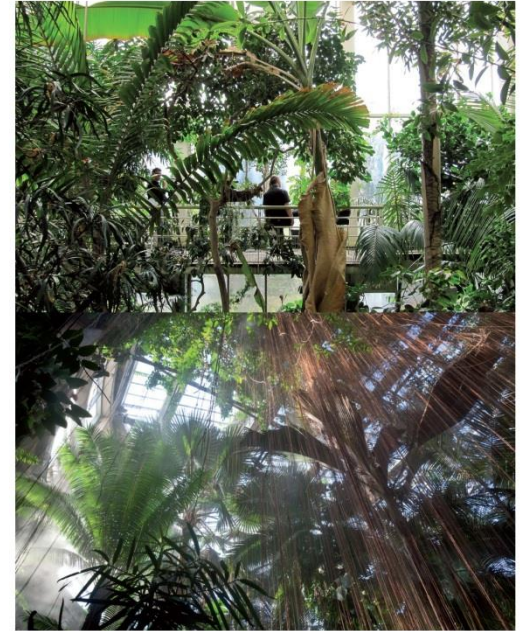
### 3 THE HINGE - THE TROPICAL GARDEN



Hinge - Section through the tropical garden and the central circulation space



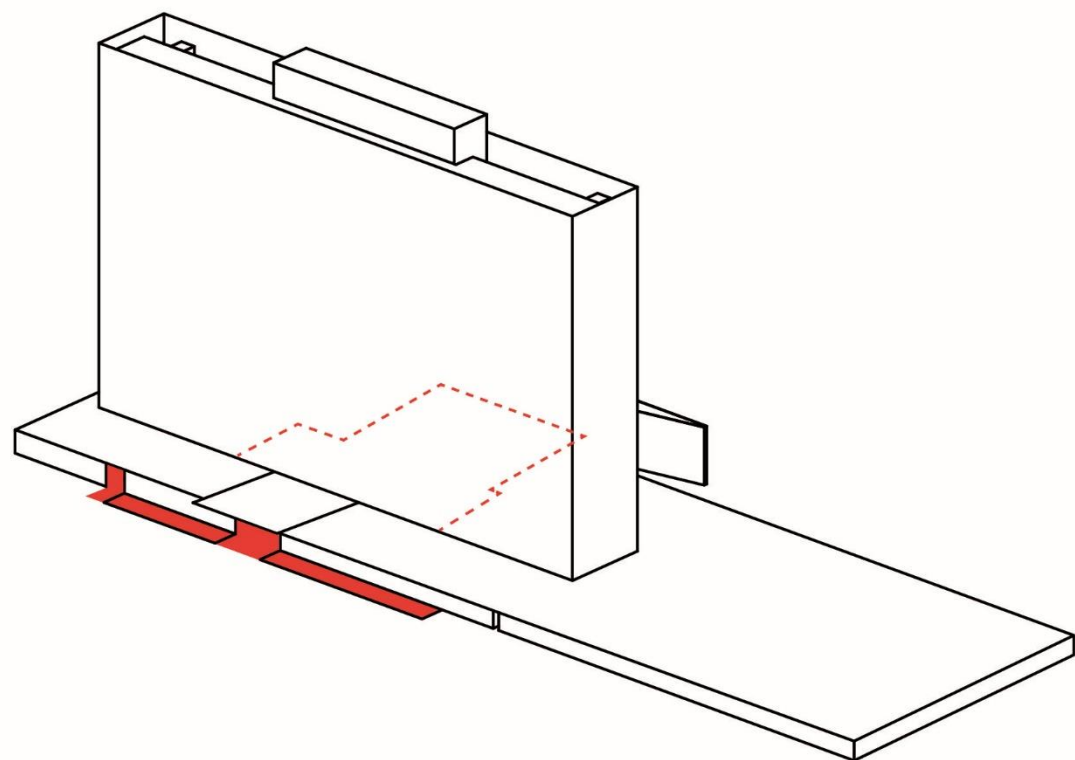
Hinge - Section through the tropical garden and the roof garden







# ENTRANCE SEQUENCE











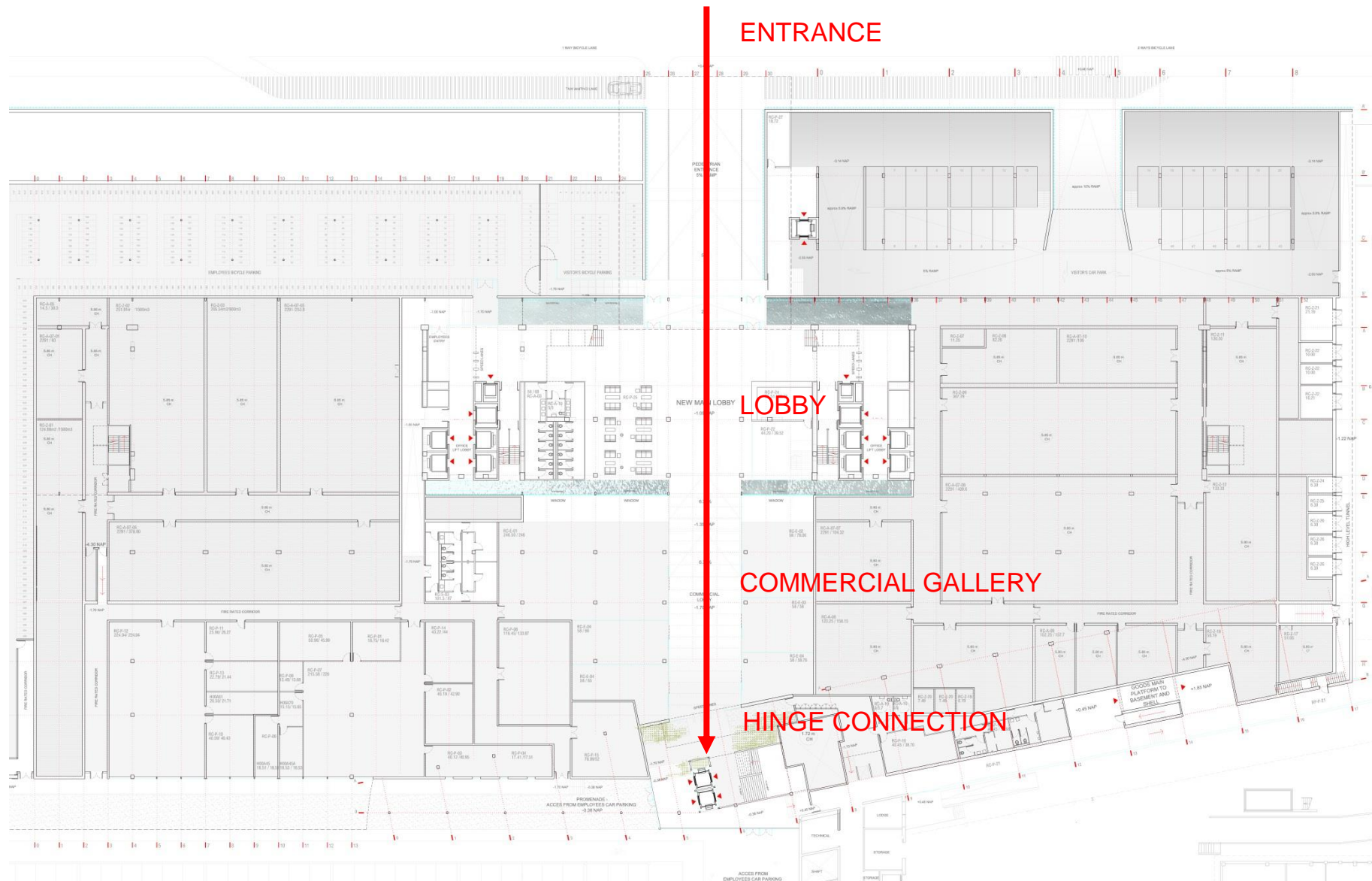








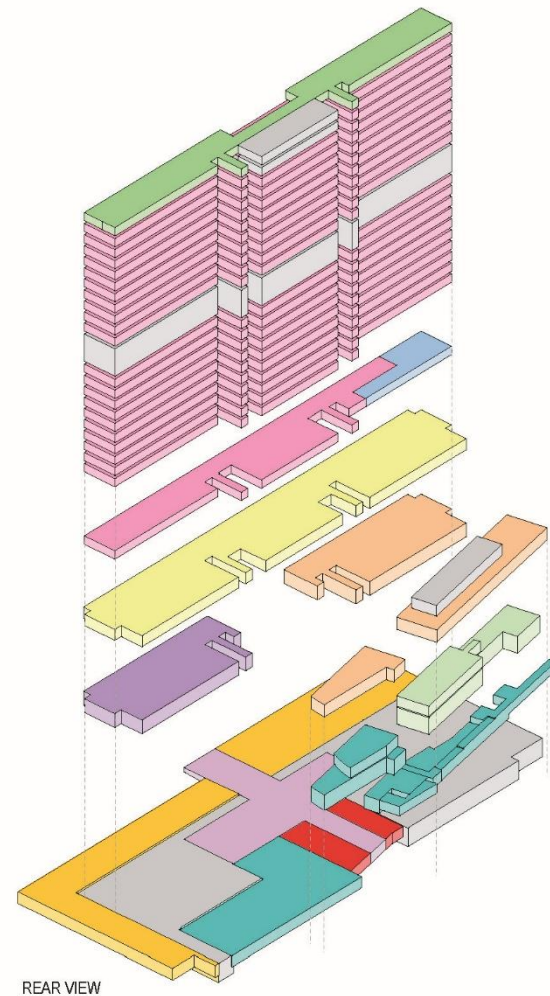
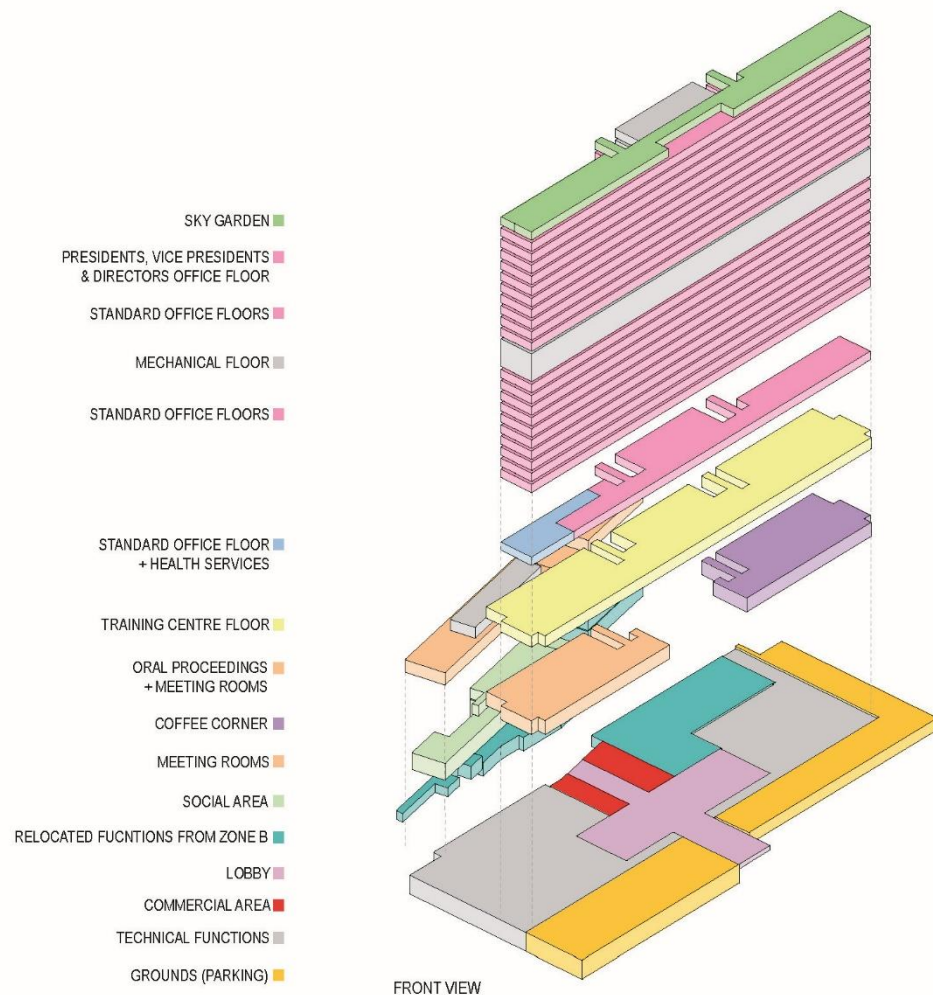




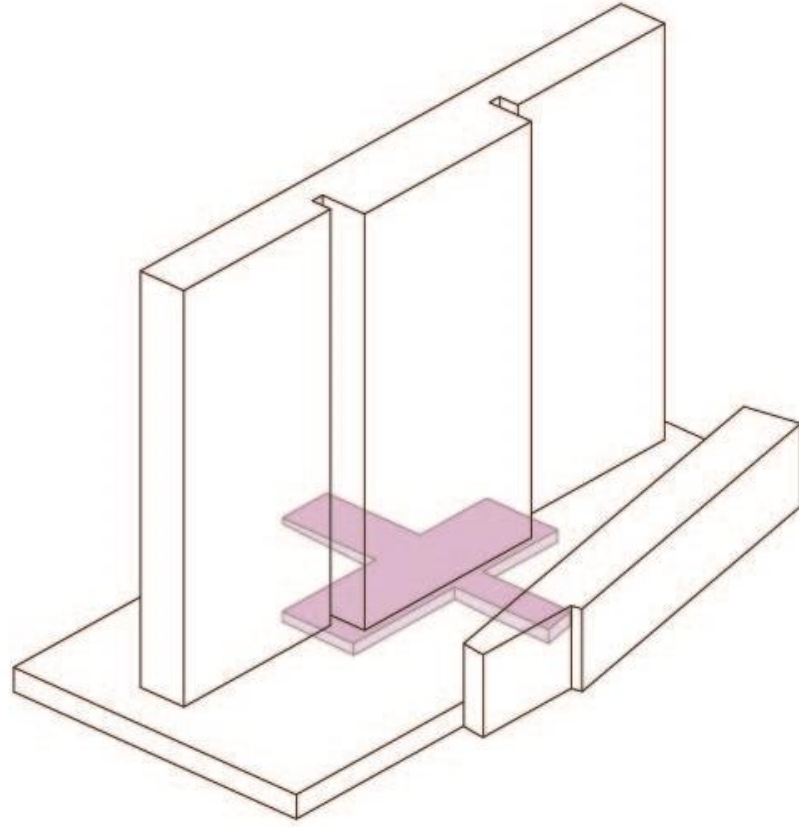


# GENERAL ORGANISATION



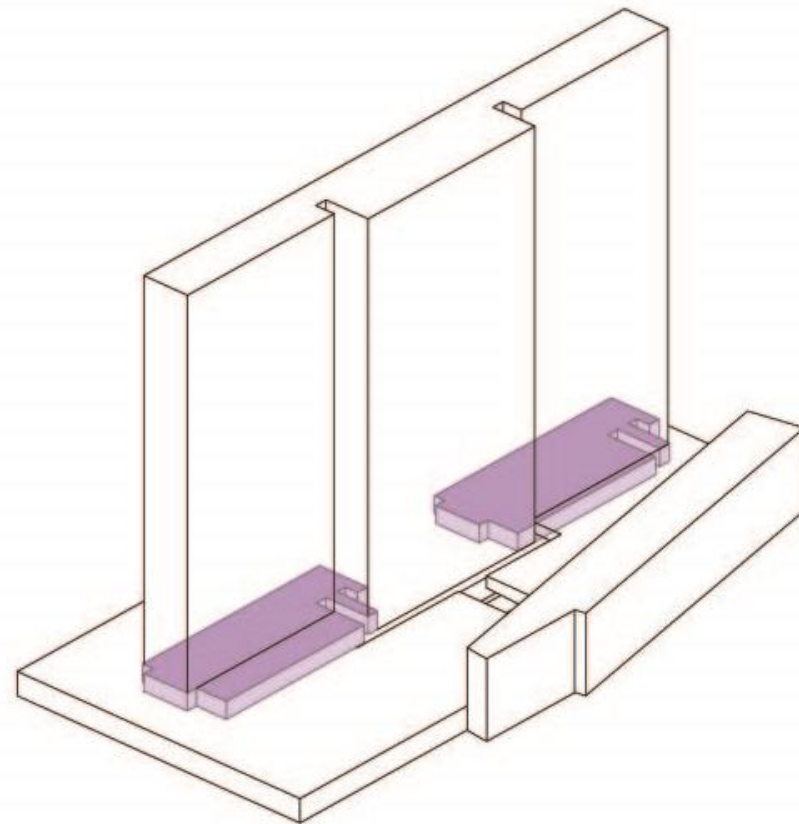


LOBBY









COFFE CORNER





# MEETING ROOMS







# OPPOSITION ROOMS



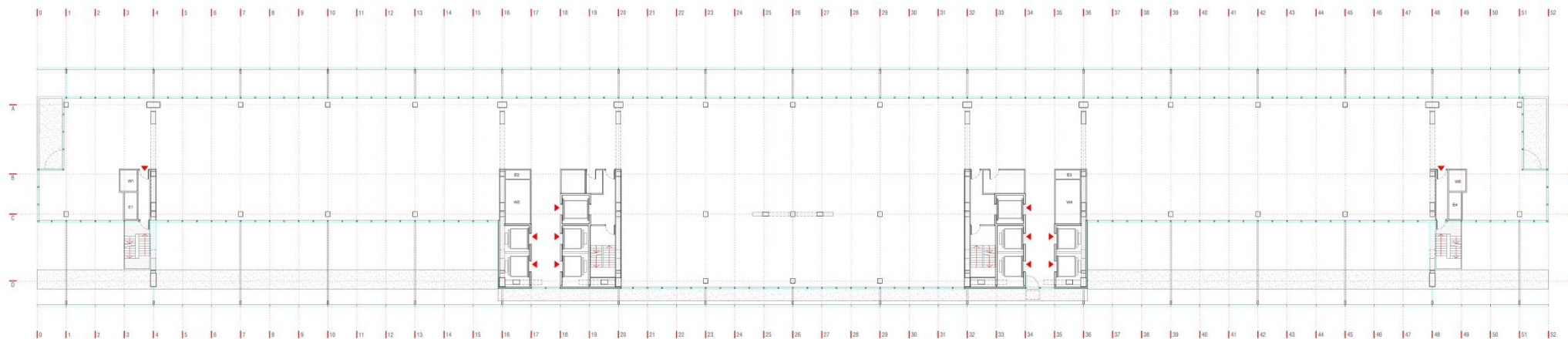






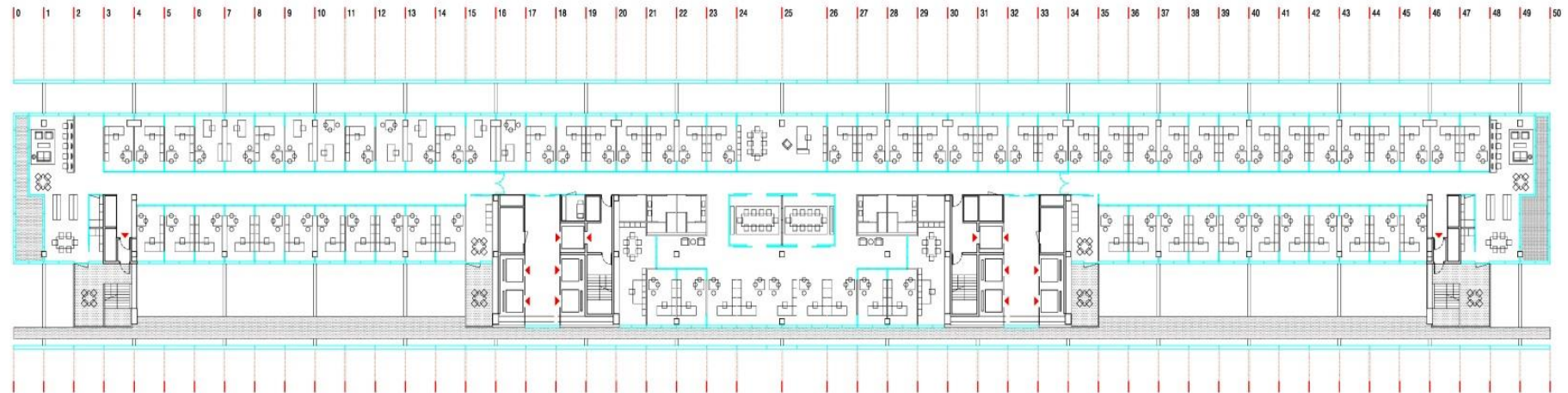


# ORGANISATION OF OFFICE FLOORS



STRUCTURAL PLAN





CLUSTERED ARRANGEMENT









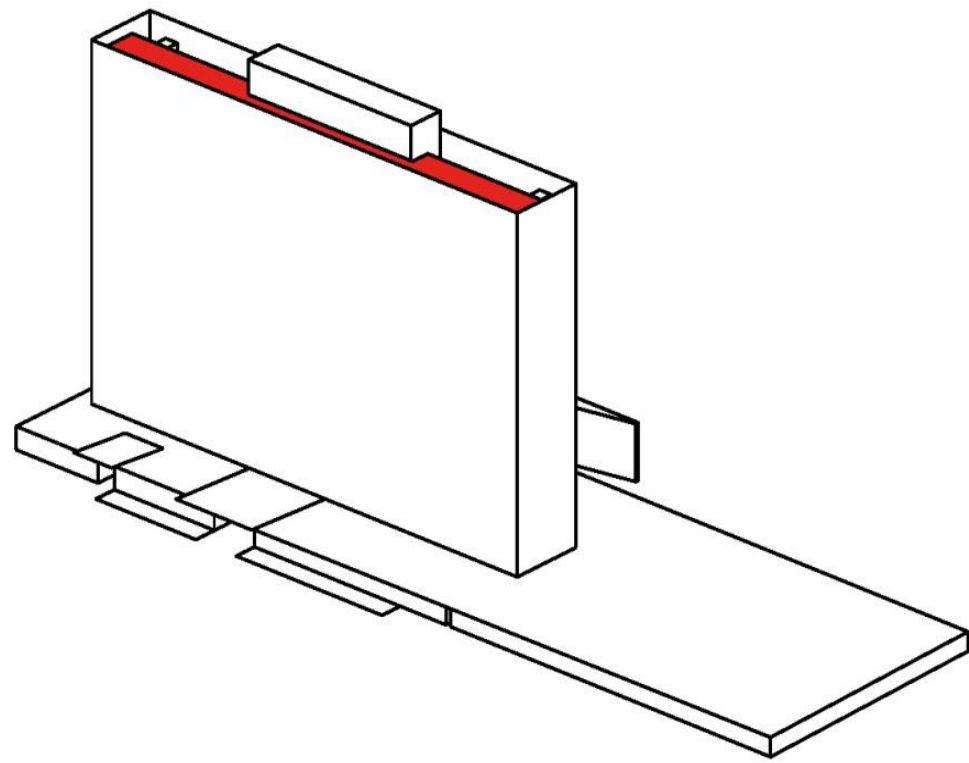


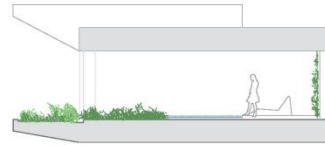
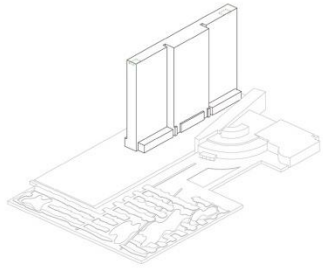




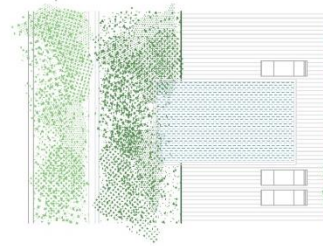
# THE SKYGARDEN







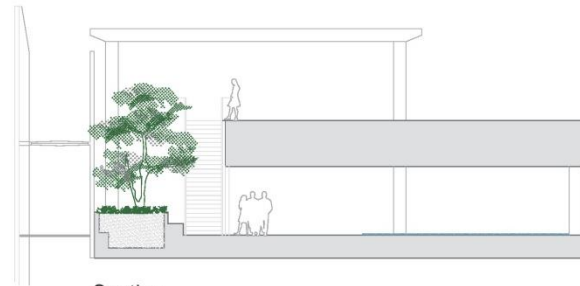
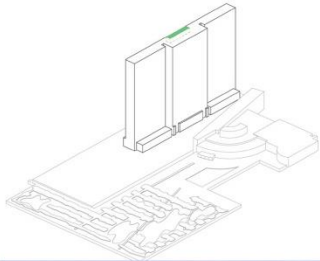
Section



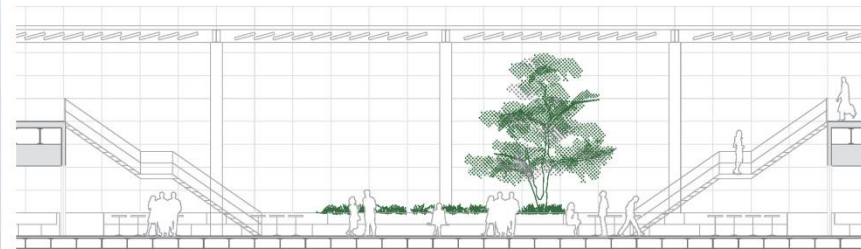
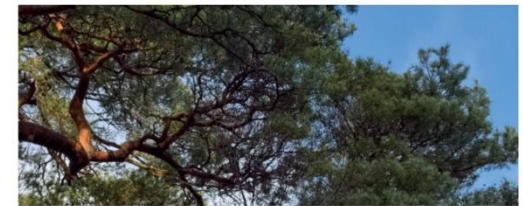
Plan



## 8 THE TREE GARDEN



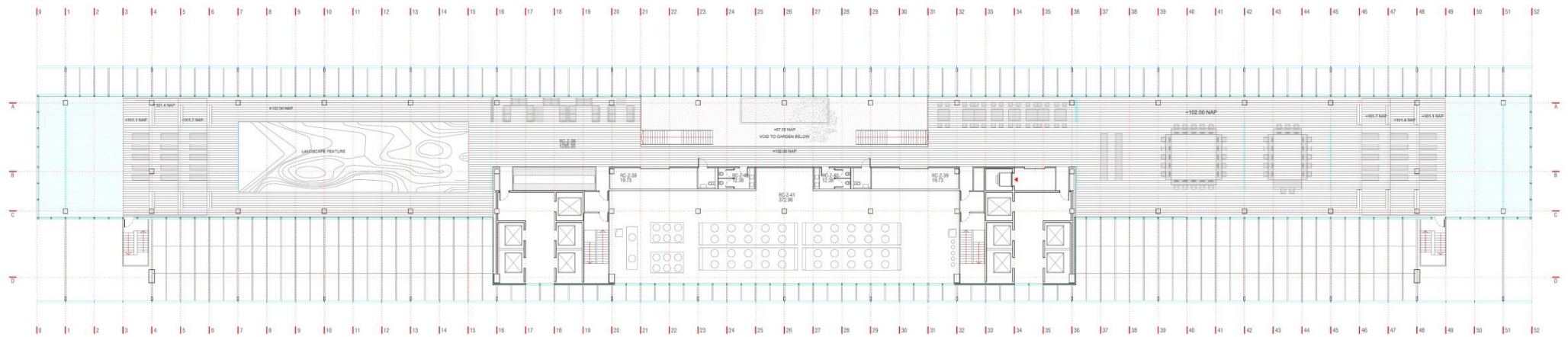
Section



Section

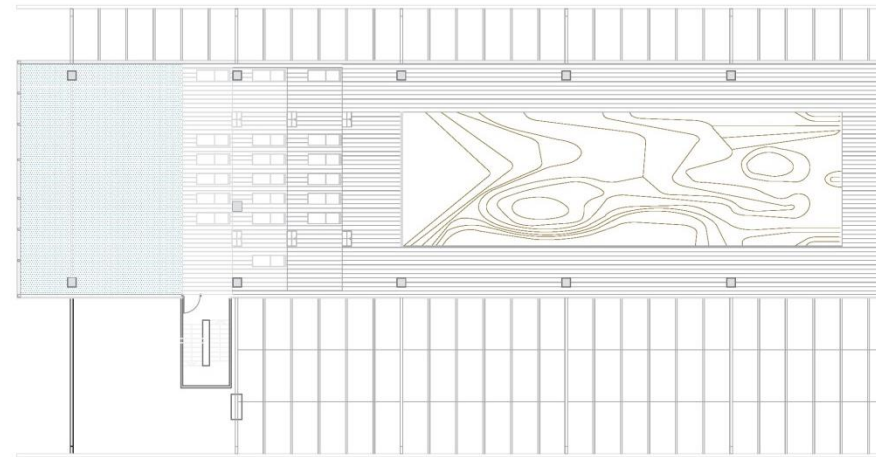
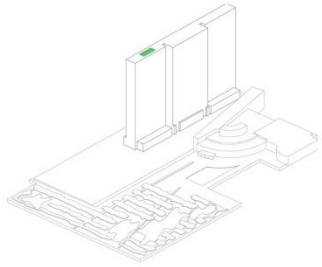




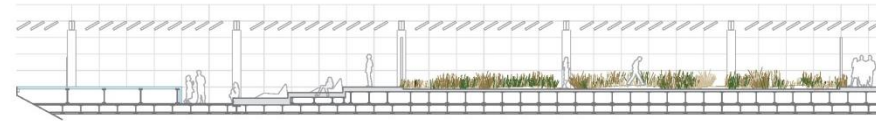


LEVEL 27





Plan



Section









